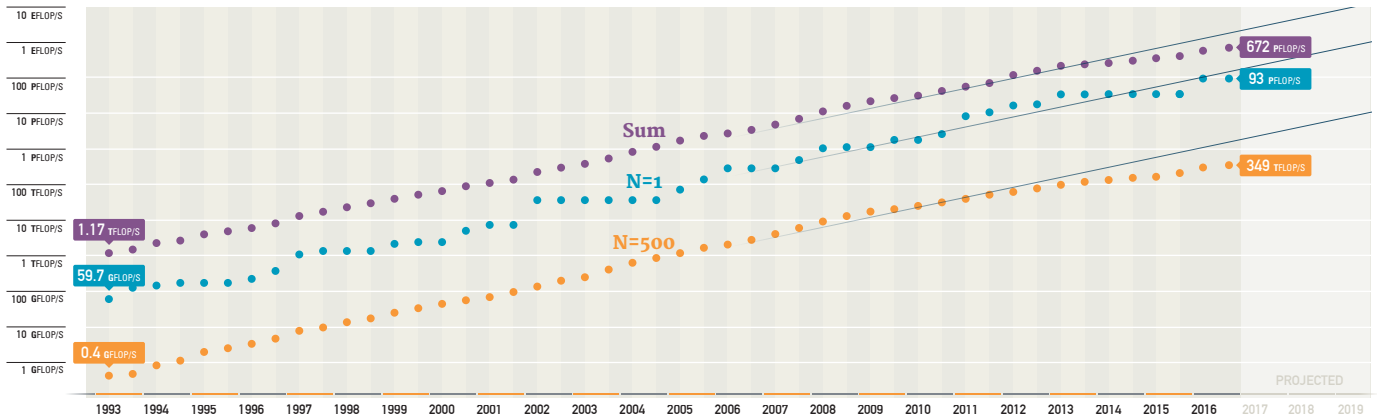


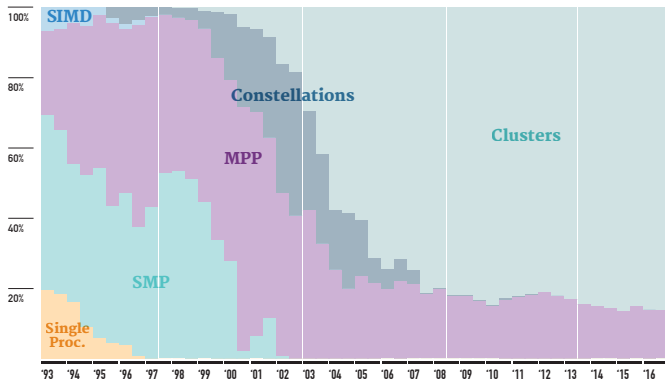


| NAME | SPECS | SITE | COUNTRY | CORES | R _{MAX} PFL/OPS | POWER MW |
|-------------------------|---|-------------------|---------|------------|--------------------------|----------|
| 1 Sunway TaihuLight | Shenwei SW26010 (260C 1.45 GHz) Custom interconnect | NSCC in Wuxi | China | 10,649,600 | 93.0 | 15.4 |
| 2 Tianhe-2 (Milkyway-2) | Intel Ivy Bridge (12C 2.2 GHz) & Xeon Phi (57C 1.1 GHz), Custom interconnect | NSCC in Guangzhou | China | 3,120,000 | 33.9 | 17.8 |
| 3 Titan | Cray XK7, Opteron 6274 (16C 2.2 GHz) + Nvidia Kepler GPU, Custom interconnect | DOE/SC/ORNL | USA | 560,640 | 17.6 | 8.2 |
| 4 Sequoia | IBM BlueGene/Q, Power BQC (16C 1.60 GHz), Custom interconnect | DOE/NNSA/LLNL | USA | 1,572,864 | 17.2 | 7.9 |
| 5 Cori | Cray XC40, Intel Xeon Phi 7250 68C 1.4GHz, Aries interconnect | DOE/SC/LBNL | USA | 622,336 | 14.0 | |

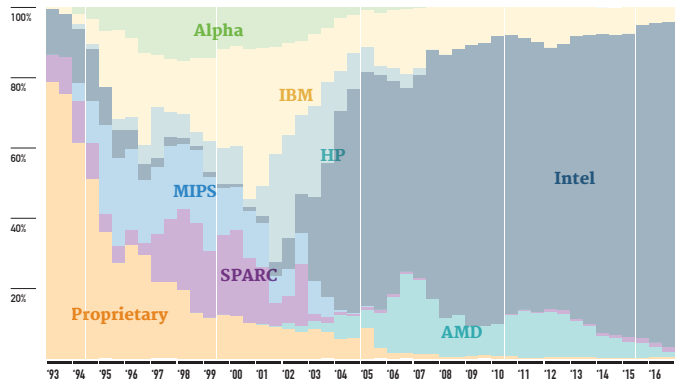
PERFORMANCE DEVELOPMENT



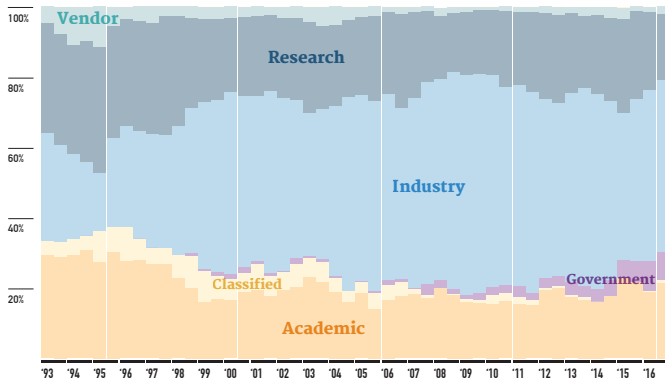
ARCHITECTURES



CHIP TECHNOLOGY



INSTALLATION TYPE



ACCELERATORS/CO-PROCESSORS

